

Springwell Solar Farm

ES Volume 2: Figures

Chapter 4: Reasonable Alternatives Considered

APFP Regulation 5(2)(a)

Planning Act 2008

Infrastructure Planning
(Applications: Prescribed Forms
and Procedure) Regulations 2009

EN010149/APP/6.2

November 2024

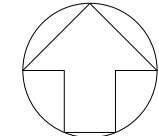
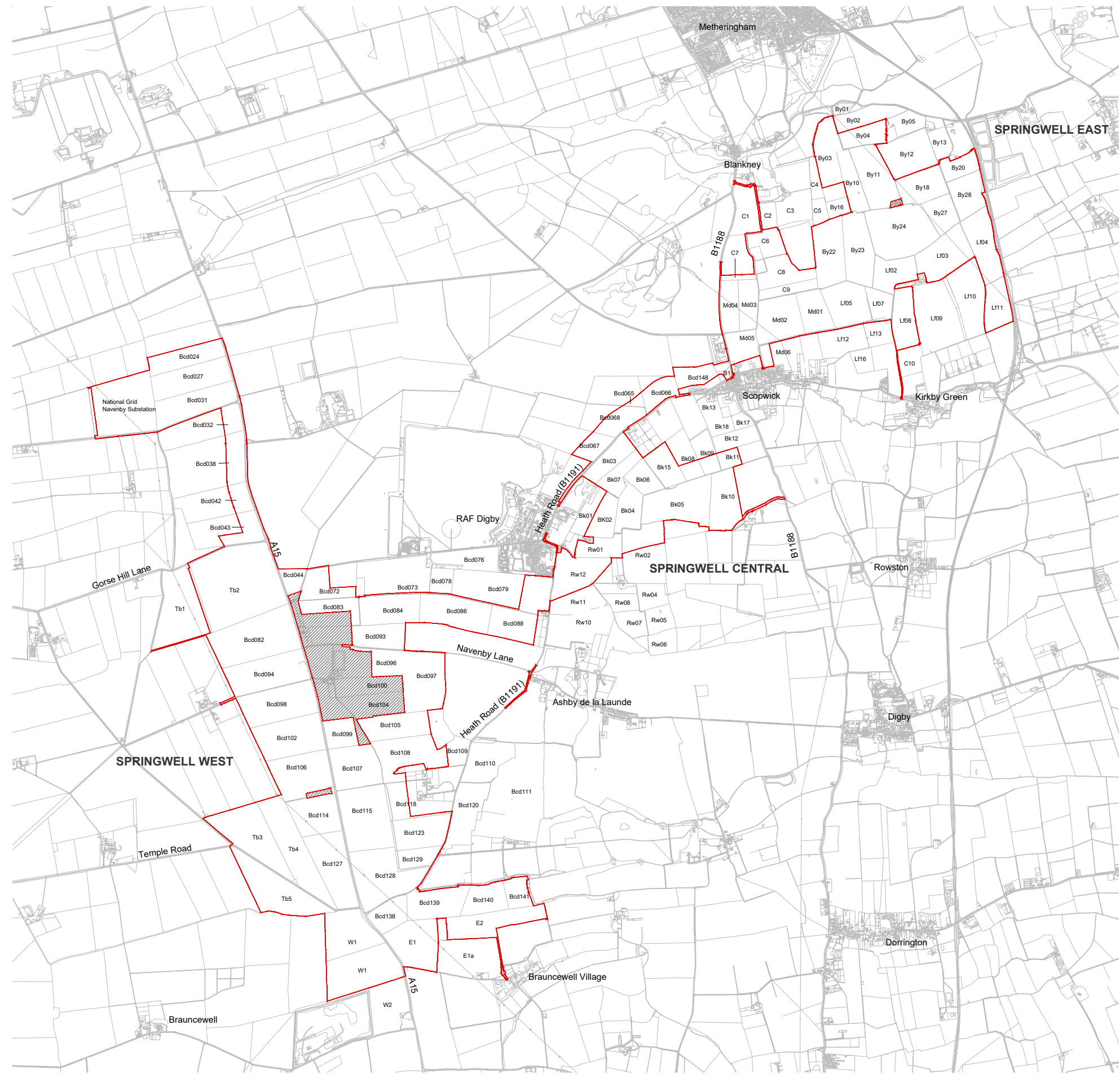
Springwell Energyfarm Ltd



ES Volume 2: Figures

Chapter 4: Reasonable Alternatives Considered

Drawing number	Revision number	Drawing title	Scale
Figure 4.1	01	Field Numbering System	A3
Figure 4.2	01	Stage 1 Zonal Masterplan	A3
Figure 4.3	01	Stage 2 Zonal Masterplan	A3



KEY:

- Order Limits
- Areas outside the Order Limits

- NOTES:**
1. Ordnance Survey (OS) MasterMap data adopted as the drawing base map.
 2. The location of features shown are indicative only. Exact locations to be confirmed on site.
 3. Additional features may be present on site that have not been identified on the OS data.
 4. The Order Limits are drawn to Land Registry boundaries. In some locations the Land Registry boundaries differ from the OS MasterMap data which results in the Order limits not aligning with the line work shown on the plan.

01	NOV 2024	DCO SUBMISSION	LDA	LDA	EDF
App	Date	Description	Drn	Chk	App

Springwell Solar Farm

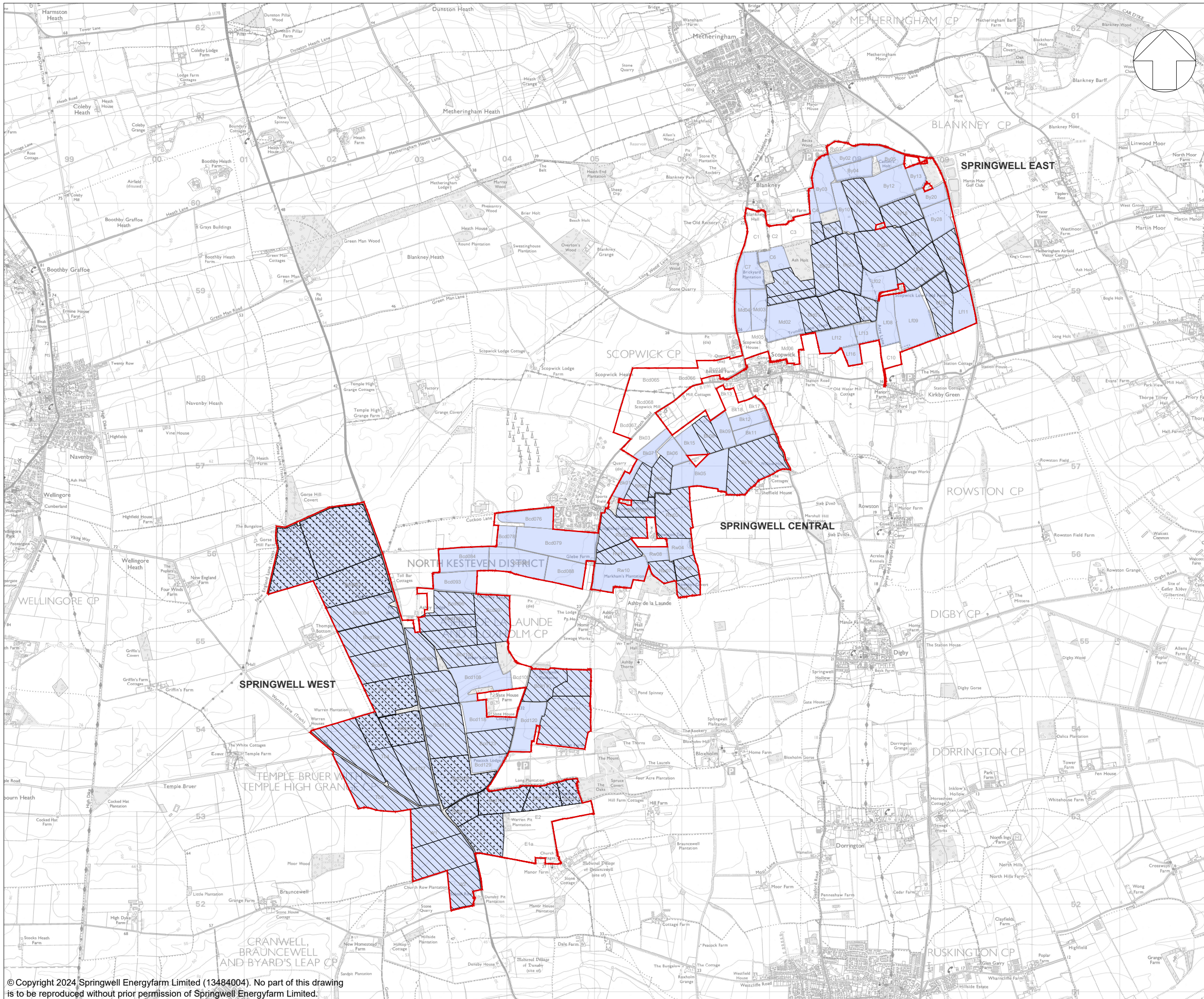
DOCUMENT:
ENVIRONMENTAL STATEMENT
VOLUME 2: FIGURES
REGULATION 5(2)(a)

TITLE:
FIGURE 4.1
FIELD NUMBERING SYSTEM



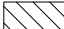
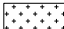
PIN REFERENCE NUMBER:
EN010149/APP/6.2

SCALE : 1:40,000 @ A3

REV: 01



KEY:

-  Order Limits
-  Proposed area for Solar PV development
-  Proposed area for Collector Compounds and/ or BESS
-  Potential area for Springwell Substation

- NOTES:**
1. Ordnance Survey (OS) 1:25,000 scale data adopted as the drawing base map.
 2. The location of features shown are indicative only. Exact locations to be confirmed on site.
 3. Additional features may be present on site that have not been identified on the OS data.
 4. The parameter plans are drawn to OS MasterMap data. In some locations OS MasterMap data differs from the OS 1:25,000 data which results in parameters not aligning with the line work shown on the plan.
 6. The following components are not shown on the parameter plans: cable route corridors, utility connections, boundary fencing and CCTV, inverter and transformers and switchgear compounds, internal access tracks, drainage, construction access and compounds, and offsets to underground utilities.

01	NOV 2024	DCO SUBMISSION	LDA	LDA	EDF
App	Date	Description	Drn	Chk	App

Springwell Solar Farm




DOCUMENT:
 ENVIRONMENTAL STATEMENT
 VOLUME 2: FIGURES
 REGULATION 5(2)(a)

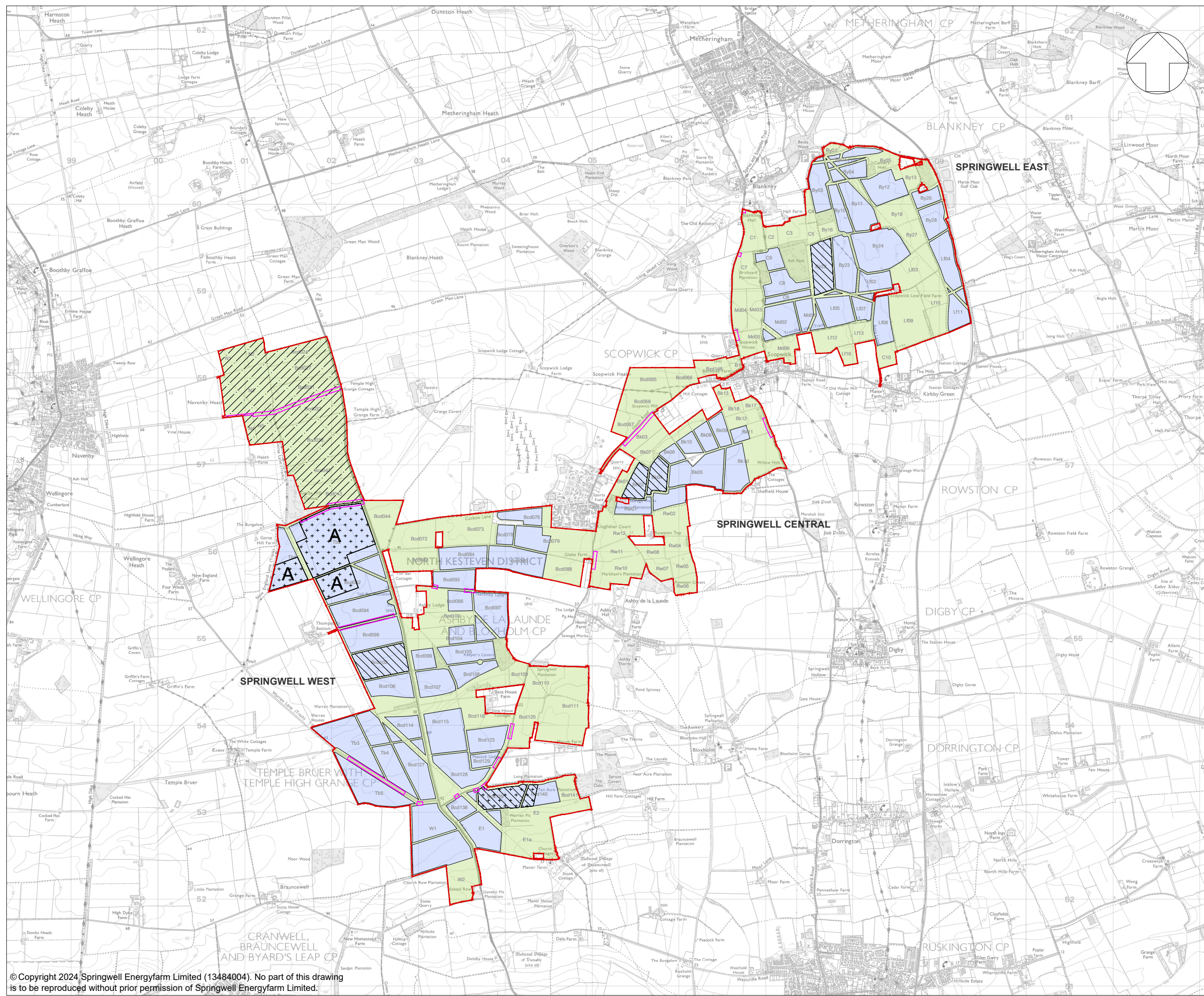
TITLE:
 FIGURE 4.2
 STAGE 1 ZONAL MASTERPLAN

PINS REFERENCE NUMBER:
 EN010149/APP/6.2

SCALE : 1:40,000 @ A3



REV:
01



KEY:

- Order Limits
- Proposed area for Solar PV development
- Indicative area for mitigation, enhancement and/or retained agricultural land
- Indicative siting zone for BESS
- Indicative siting zone for Satellite Collector Compounds
- Indicative siting zone for Springwell Substation and Main Collector Compound
- Indicative site access location
- Indicative siting zone for Grid Connection Corridor

- NOTES:**
1. Ordnance Survey (OS) 1:25,000 scale data adopted as the drawing base map.
 2. The location of features shown are indicative only. Exact locations to be confirmed on site.
 3. Additional features may be present on site that have not been identified on the OS data.
 4. The parameter plans are drawn to OS MasterMap data. In some locations OS MasterMap data differs from the OS 1:25,000 data which results in parameters not aligning with the line work shown on the plan.
 5. The following components are not shown on the parameter plans: cable route corridors, utility connections, boundary fencing and CCTV, inverter and transformers and switchgear compounds, internal access tracks, drainage, construction access and compounds, and offsets to underground utilities.

01	NOV 2024	DCO SUBMISSION	LDA	LDA	EDF
App	Date	Description	Drn	Chk	App

Springwell Solar Farm



DOCUMENT:
ENVIRONMENTAL STATEMENT
VOLUME 2: FIGURES
REGULATION 5(2)(a)

TITLE:
FIGURE 4.3
STAGE 2 ZONAL MASTERPLAN

PINS REFERENCE NUMBER:
EN010149/APP/6.2

SCALE : 1:40,000 @ A3

REV:
01

